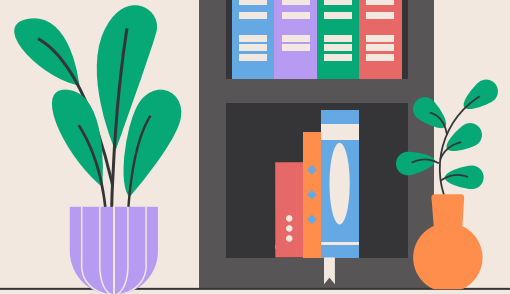


From Classroom to Community: Developing Practical Skills for Future Librarians

Gabrielle Riter and Francesca Marineo Munk

SCIL Works 2025 | February 7th, 2025

Follow Along: bit.ly/scil2025



WHO WE ARE



Gabrielle Riter

Librarian at Pepperdine University's West LA Campus and Liaison to the Graduate School of Education and Psychology

Former Library Student Research Assistant at UCLA



Francesca Marineo Munk

Humanities and Social Sciences Librarian and Coordinator of Library Student Research Assistants at UCLA



The Library Student Research Assistant (LSRA) Program

A peer-to-peer research help student position rooted in collaboration, mentorship, and hands-on experience



Instruction Skills and Relationship Building

EDUCATION

1

LSRAs have the option of a quarter-long library instruction training program offered through the Library

EXPERIENCE

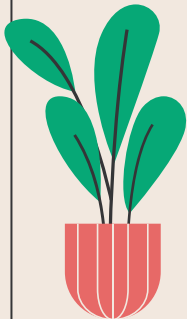
2

LSRAs develop their skills through hands on experience co-teaching classes, building LibGuides, and more

NETWORKING

3

LSRAs meet folks from across the Library with opportunities to learn, exchange ideas, and build lasting relationships



STUDENT EXPERIENCE

- The LSRA program provides invaluable experience not found in classrooms
- Helped build confidence
- Strengthens community within instruction librarianship



HOW CAN YOU SUPPORT LIS STUDENTS?



COLLABORATE

Work with student workers at your library



INTERNSHIPS & MENTORSHIPS

Create internships and mentorship opportunities at your library



TAKE INITIATIVE

Reach out to LIS programs to connect





LEARN MORE

LSRAs at UCLA

Johnson, M. W; Bowline, E.; King, D. L; Osuna-Garcia, A.; Page, S.; Tadesse, A., et al. (2023). Collaborative research services: A peer-led cohort approach. *Reference Services Review*, 51(1).
<http://dx.doi.org/10.1108/RSR-09-2022-0049> Retrieved from <https://escholarship.org/uc/item/10m1q3pc>

Johnson, M. W, & Romero, R. (2024). At the Intersection of Person-Centered Management and Learner-Centered Pedagogy: Training, Managing, and Mentoring Student Staff. In *Person-Centered Management in Academic Libraries*. Retrieved from <https://escholarship.org/uc/item/6m1414z9>

INTERNSHIP & MENTORSHIP RESOURCES

Formal mentorship programs: [CARL Mentoring Program](#) | [ACRL IS Mentoring Program](#) | [ALA Mentoring Opportunities](#)

Starting an Internship: [Internships: For the Student and For the Library](#) | [Inclusive Internship Initiative Toolkit](#) | [Implementing a Library Intern Program](#)

Additional Resources: [UCLA MLIS Internship Program](#) | [Redesigning an Academic Library Internship Program with Equity in Mind](#) | [Results for Résumés: Managing Undergraduate Library Interns](#)

○ THANKS!

PLEASE REACH OUT WITH ANY QUESTIONS!

Gaby Riter: gabrielle.riter@pepperdine.edu

Fran Marineo Munk: marineo@library.ucla.edu

Slides: bit.ly/scil2025

CREDITS: This presentation template was created by **Slidesgo**, and includes icons by **Flaticon**, and infographics & images by **Freepik**

